

1090 Top Coat Application Guide

Warning

1090 Top Coat is NOT a peelable coating and should only be applied on top of a peelable coating

Use

1090 Top Coat is designed to improve the waterproofing properties of our peelable coatings and should be used if the coating is likely to be subjected to direct rainfall or is likely to get wet.

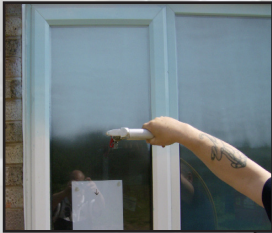
Application

Peelable coatings and 1090 can be applied by airless spray or roller. If you are using airless spray 1090 can be applied directly on to the peelable coating whilst it is still wet. If you are applying 1090 by roller you should first allow the peelable coating to dry.

1. Apply the peelable coating by airless spray or roller at a minimum wet film thickness as per the TDS (see how to use a wet film gauge). Note: Although white in a liquid state, 1090 Top Coat will dry to form a clear coating.
2. If 1090 is applied by airless spray you can either apply wet-on-wet or wait for the peelable coating to dry before applying 1090 at a wet film thickness of 150 Microns.
3. When applying 1090 by roller allow the peelable coating to dry and then apply a coat thickness of 150 Microns wet film thickness

1090 Top Coat Application Guide

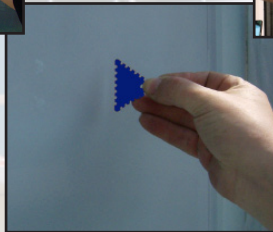
1090 Top Coat is not a peelable coating and should only be applied on top of the peelable coating.



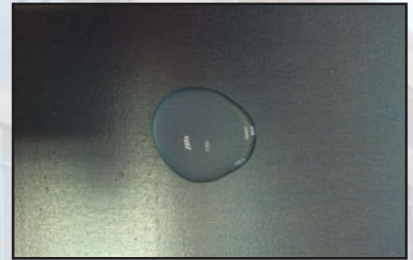
Spray Applied



Roller Applied



Check Coat Thickness



1090 Top Coat is suitable for up to 12 months exposure as a waterproof top coat when applied on top of the peelable coating.